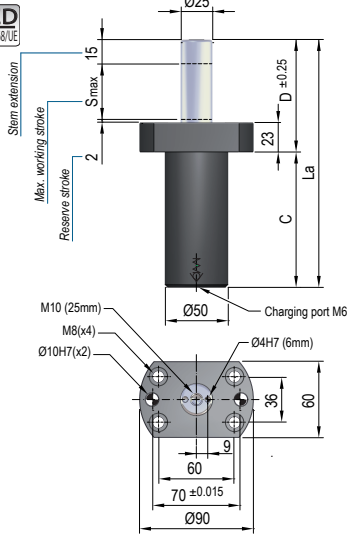
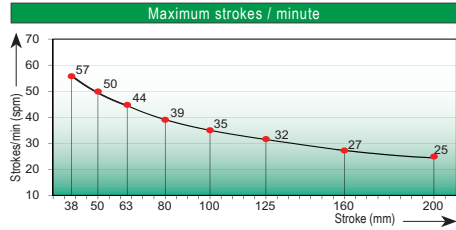




VDI SAFETY



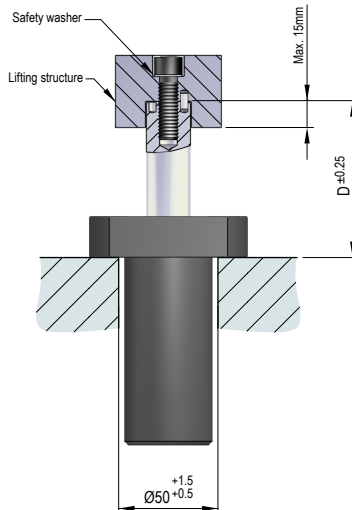
| | |
|-------------------------------|----------------------------|
| Pressure medium | Nitrogen (N ₂) |
| Max. charging pressure | 50 Bar |
| Min. charging pressure | 25 Bar |
| Rod seal area | 4,91 cm ² |
| Operating temperature | 0°C - 80°C |
| Force increase by temperature | 0,33 %/°C |
| Max. stem speed | 1,6 m/s |
| Maintenance kit | Kit SL250 |



| Code | S _{max} mm | L _a mm | C mm | D mm | F _a daN | 90% F daN | 100% F _c daN | P Bar | V l |
|--------------|---------------------|-------------------|------|------|--------------------|-----------|-------------------------|--------------|-------|
| TPSL 250x38 | 38 | 173 | 95 | 78 | 250 ±5% (20°C) | 370 | 390 | 50 (20°C) | 0,050 |
| TPSL 250x50 | 50 | 197 | 107 | 90 | | 370 | 395 | | 0,065 |
| TPSL 250x63 | 63 | 223 | 120 | 103 | | 370 | 395 | | 0,082 |
| TPSL 250x80 | 80 | 257 | 137 | 120 | | 375 | 395 | | 0,103 |
| TPSL 250x100 | 100 | 297 | 157 | 140 | | 375 | 400 | | 0,128 |
| TPSL 250x125 | 125 | 347 | 182 | 165 | | 375 | 400 | | 0,160 |
| TPSL 250x160 | 160 | 417 | 217 | 200 | | 375 | 400 | | 0,204 |
| TPSL 250x200 | 200 | 497 | 257 | 240 | | 375 | 400 | | 0,254 |

(Other strokes under order)

Mounting example



The stem is an extra 15mm long to facilitate attachment to the lifting structure.

TPSL

STOP CYLINDER

STOP CYLINDER

TPSR

TPSRS

TPNS

TPHT

